

Oil/fuel and coalescence separator *EasyOil ground*

For underground installation



Fig. 1

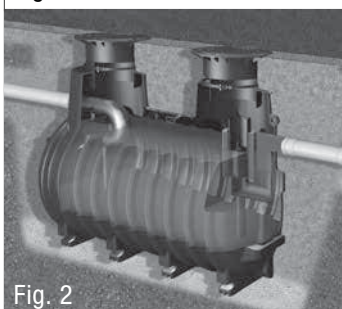
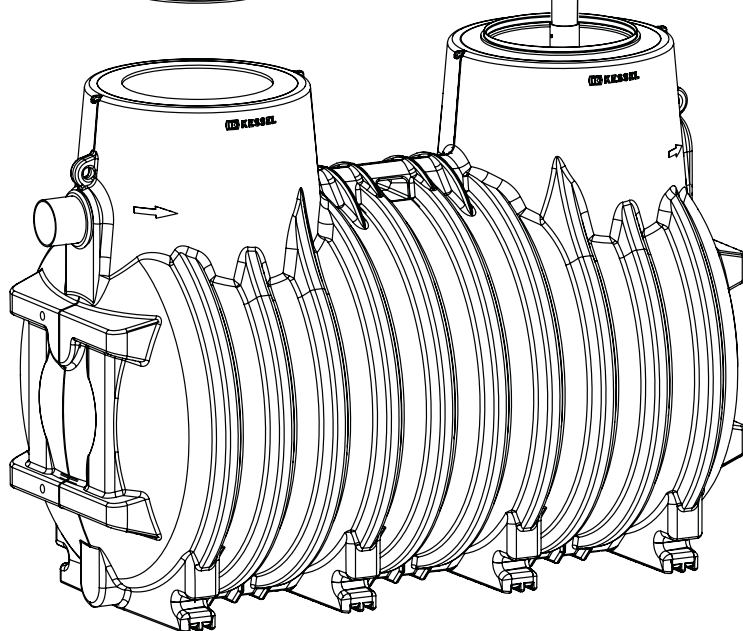
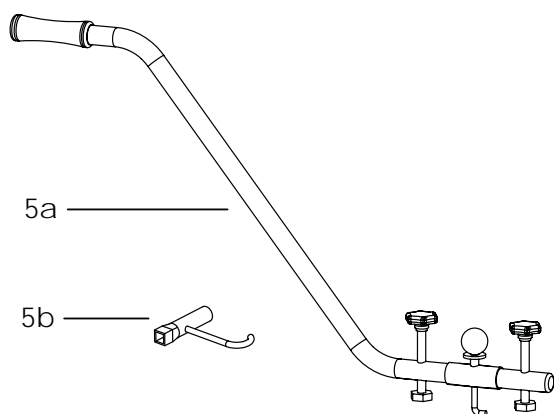
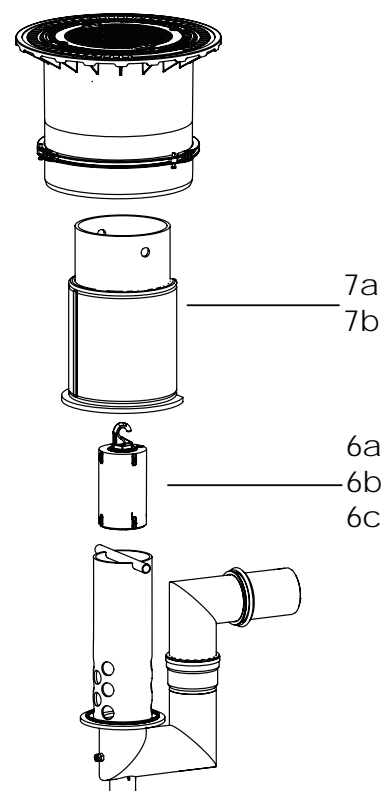
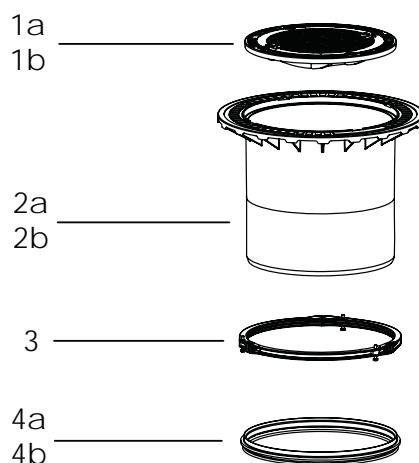


Fig. 2



Pos.	Designation	Art. #
1	Cover plate made of cast iron	
1a	Class AB	680321
1b	Class D	680322
2	Upper section	
2a	resistant to surface water, Class B	680324
2b	Class D	860141
3	Clamping ring for upper section	680276
4	Lip seal	
4a	in the inspection chamber (Fig. 1) current version up to NS 4. In the cistern (Fig. 2) NS 7 - 35, up to 12/2014	860116

Pos.	Designation	Art. #
4b	for cistern (Fig. 2) NS 7-35, from model year 01/2015	860104
5a	Chamber cover lifting tool Goliath	917112
5b	Removal key	680278
6	Float switch	
6a	with density 0.97 g/cm ³	680299
6b	with density 0.92 g/cm ³ Serie	680300
6c	with density 0.87 g/cm ³	680301
7	Coalescence filter insert	
7a	for cistern (Fig. 2)	917805
7b	for inspection chamber (Fig. 1)	917816